

The 15th

Korea-Japan-China Bioinformatics Symposium 2017



June 21-22, 2017 The 15th KJC Bioinformatics Symposium, Seoul, Korea

Genomic History of modern humans in East Eurasia

SAITOU Naruya

National Institute of Genetics

Mishima, Japan

June 21st, A.S. 0017

Koreana Hotel, Seoul, Korea

Discerning the origins of the Negritos, First Sundaland Peoples: deep divergence and archaic admixture (submitted)

Timothy A. Jinam,¹ Maude E. Phipps,² Farhang Aghakhanian,² Partha P. Majumder,³ Francisco Datar,⁴ Mark Stoneking,⁵ Hiromi Sawai,⁶ Nao Nishida,^{6,7} Katsushi Tokunaga,⁶ Shoji Kawamura,⁸ Keiichi Omoto,⁹ Naruya Saitou¹

1) Division of Population Genetics, National Institute of Genetics, Mishima, 411-8540, Japan

2) Jeffrey Cheah School of Medicine and Health Sciences, Monash University Malaysia, Sunway City, 46150 Selangor, Malaysia

3) National Institute of Biomedical Genomics, Kalyani 741251, West-Bengal, India

4) Department of Anthropology, University of the Philippines, Diliman, Quezon City 1101, the Philip

5) Department of Evolutionary Genetics, Max Planck Institute for Evolutionary Anthropology, Deu

6) Department of Human Genetics, Graduate School of Medicine, The University of Tokyo, Tokyo 1

7) Department of Hepatic Disease, Research Center for Hepatitis and Immunology, National Center for Global Health and Medicine, Chiba 272-8516, Japan

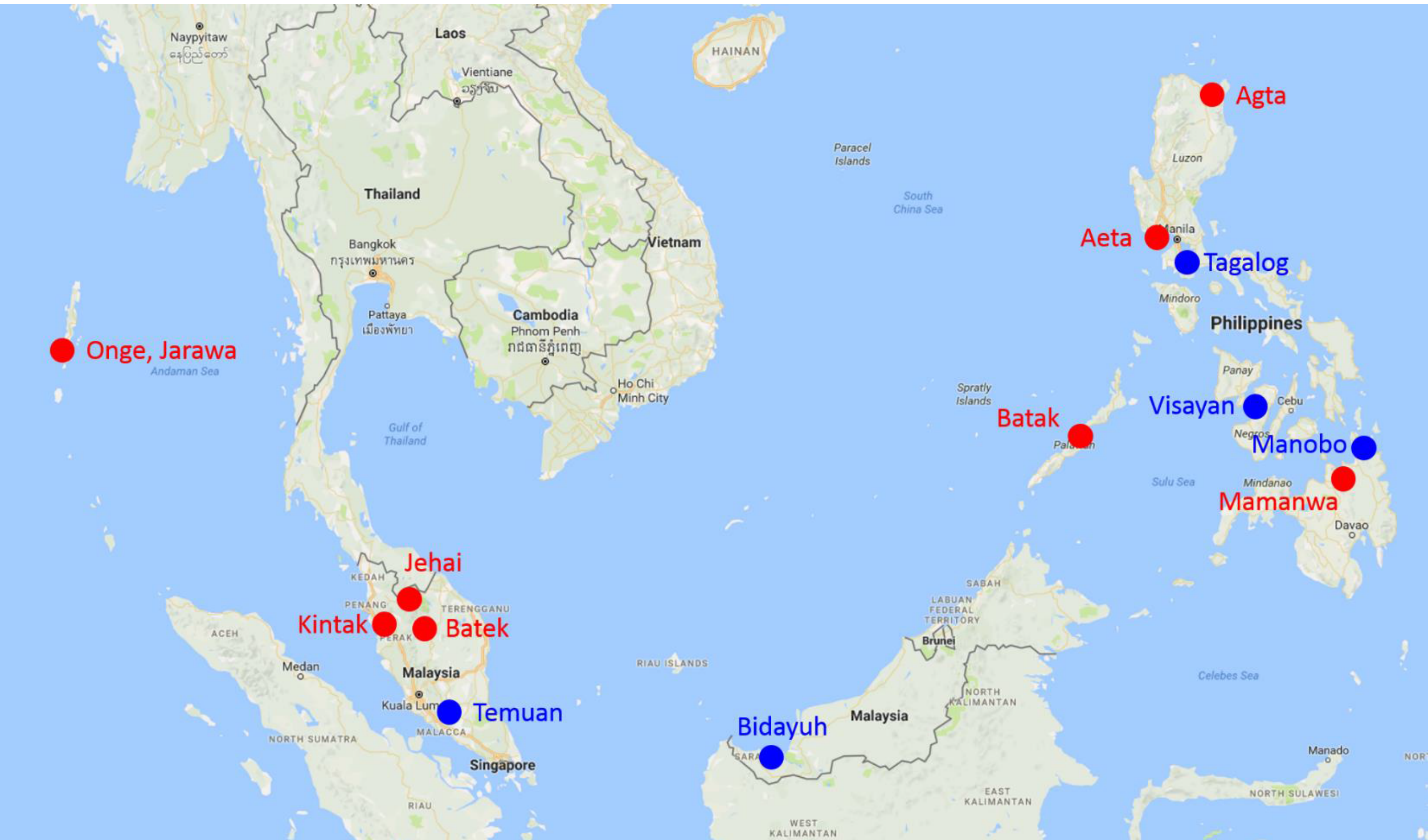
8) Department of Integrated Biosciences, Graduate School of Frontier Sciences, The University of T

9) Department of Anthropology, Faculty of Science, The University of Tokyo, Tokyo 113-0033, Japan



**Dr. Timothy A. Jinam
at Kanazawa in 2015**

● Negritos ● Non-Negritos





January, 1982; Palawan Island



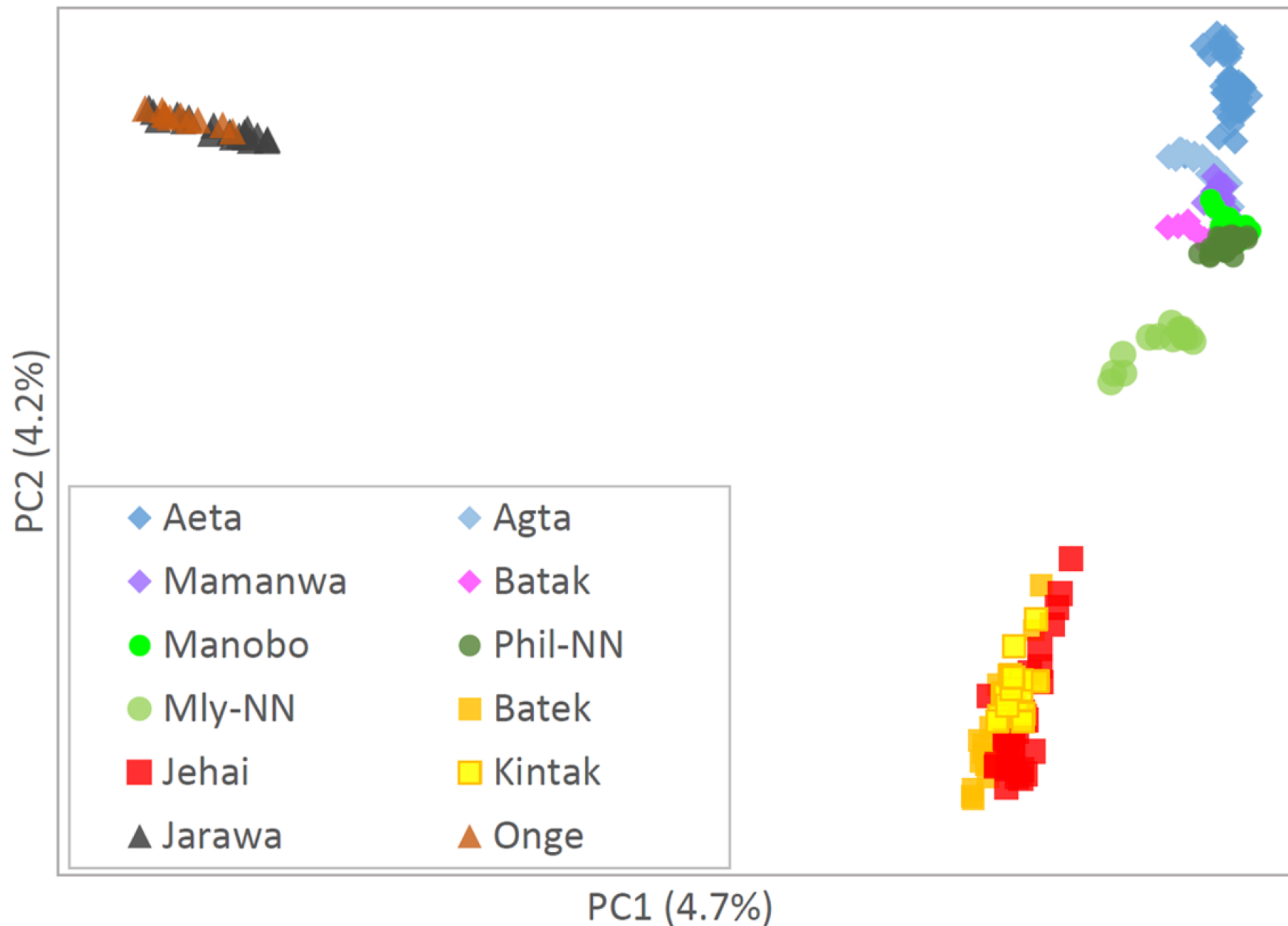
February, 1982; Tappa, Pamplona



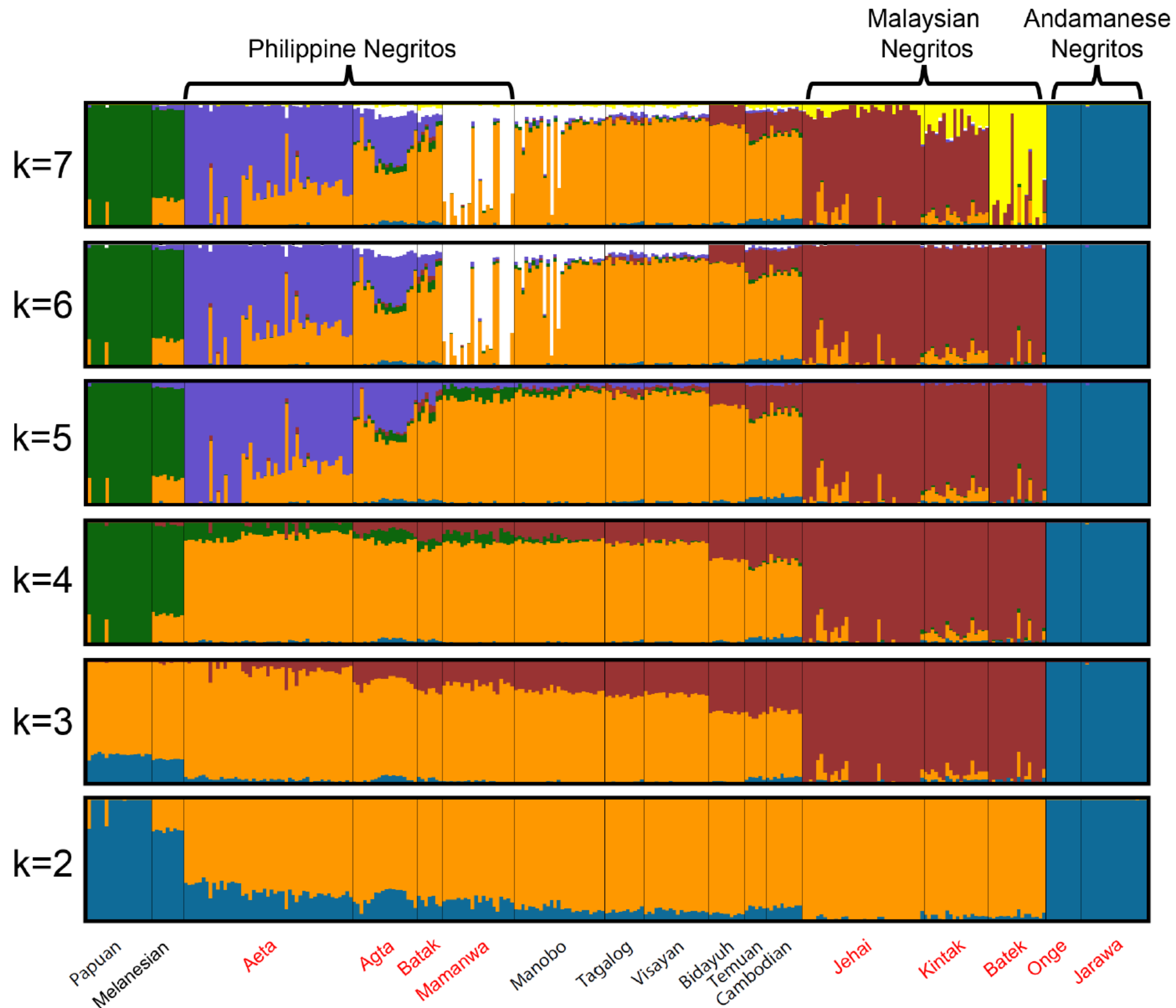


February, 1982; Palaui Island

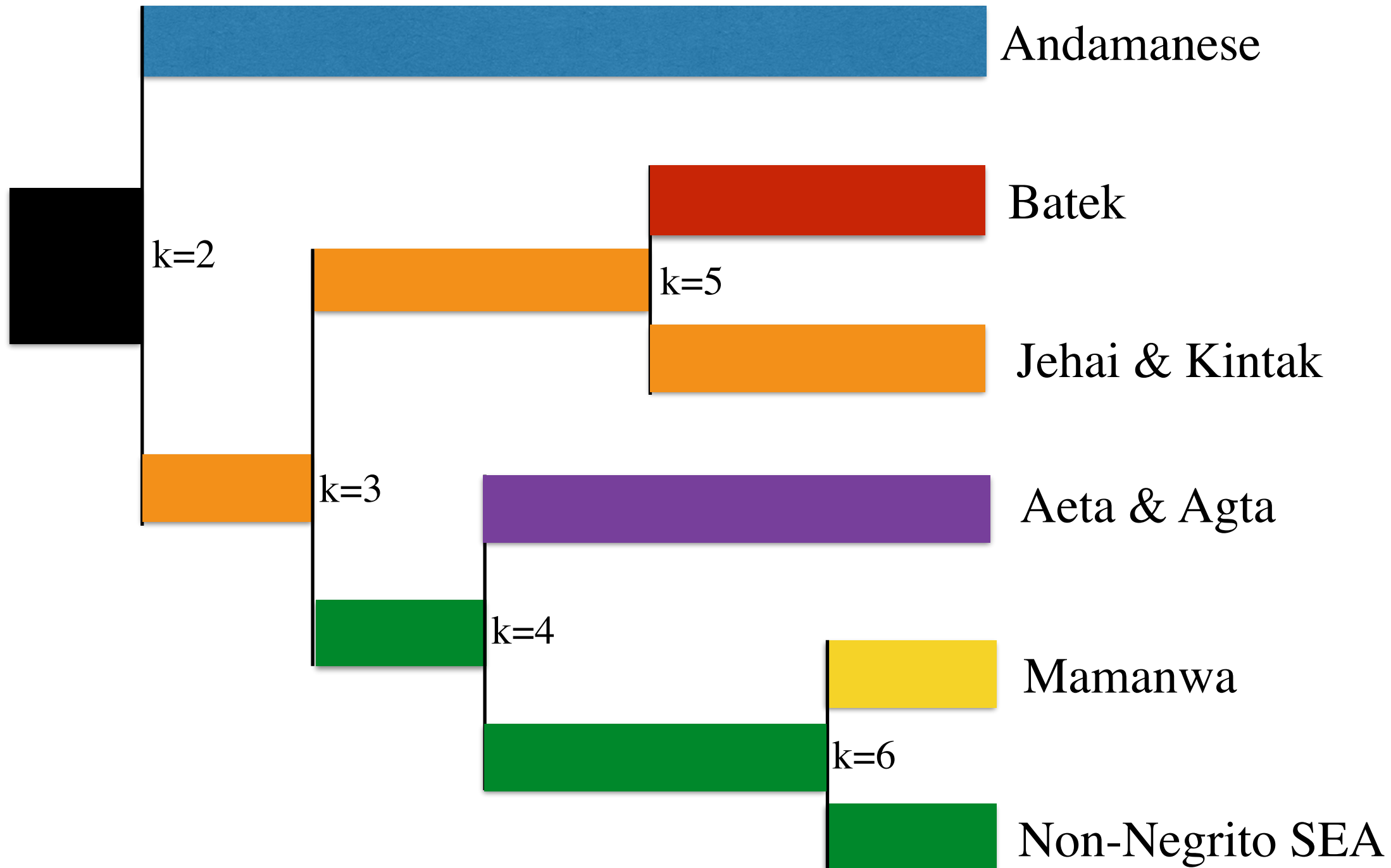
PCA of All Negritos



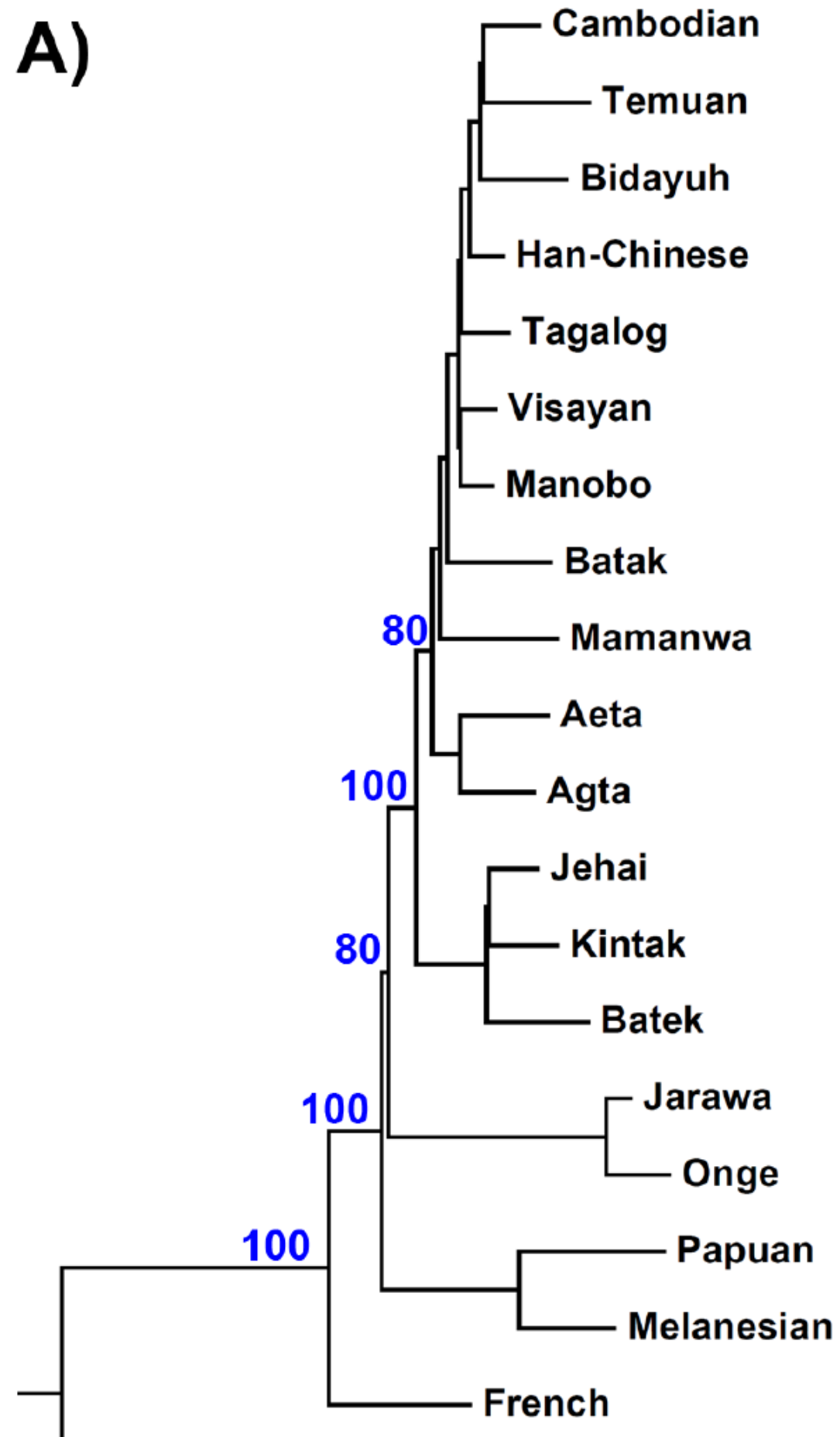
Admixture Analysis



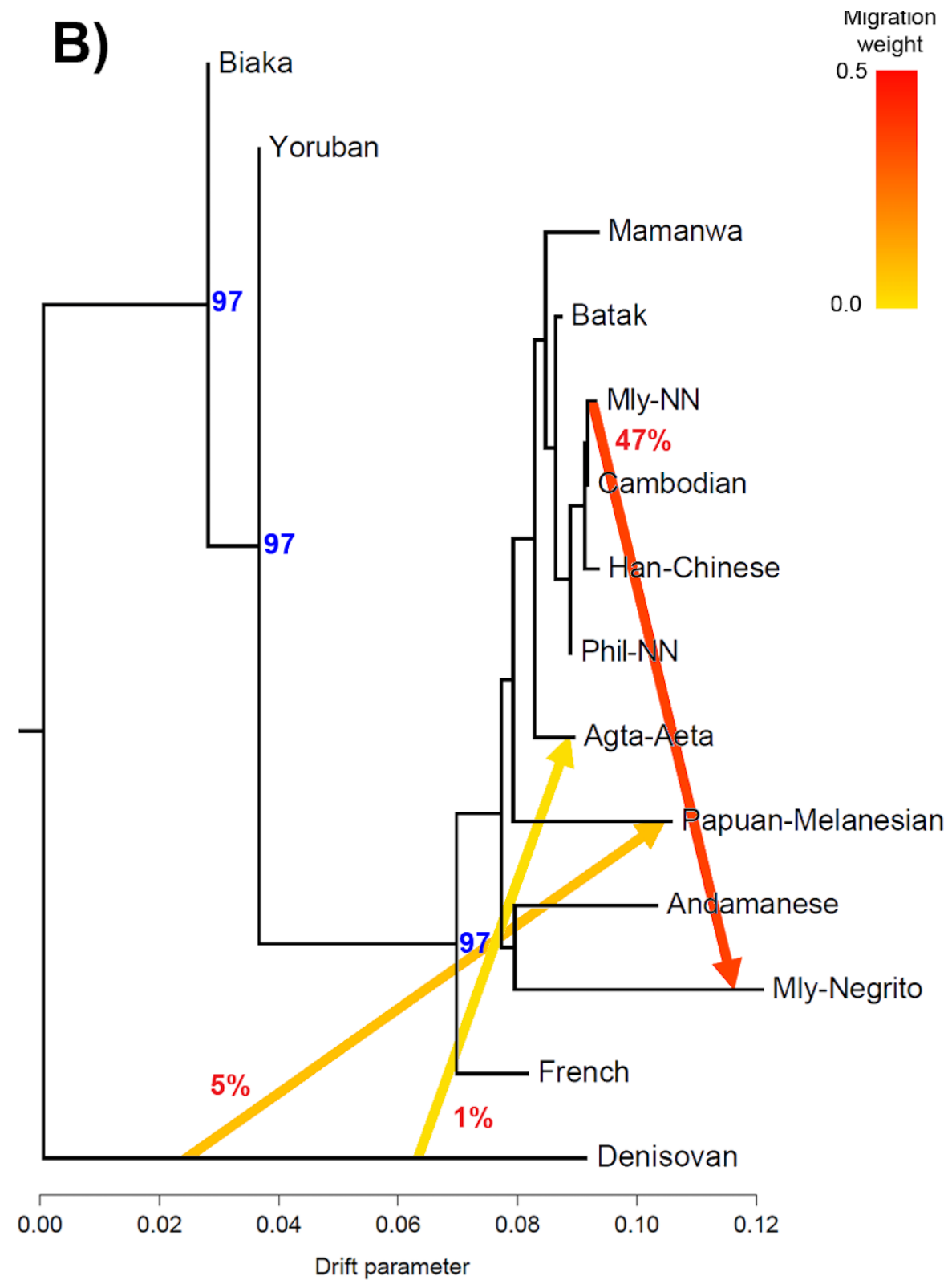
Phylogenetic interpretation of admixture analysis results



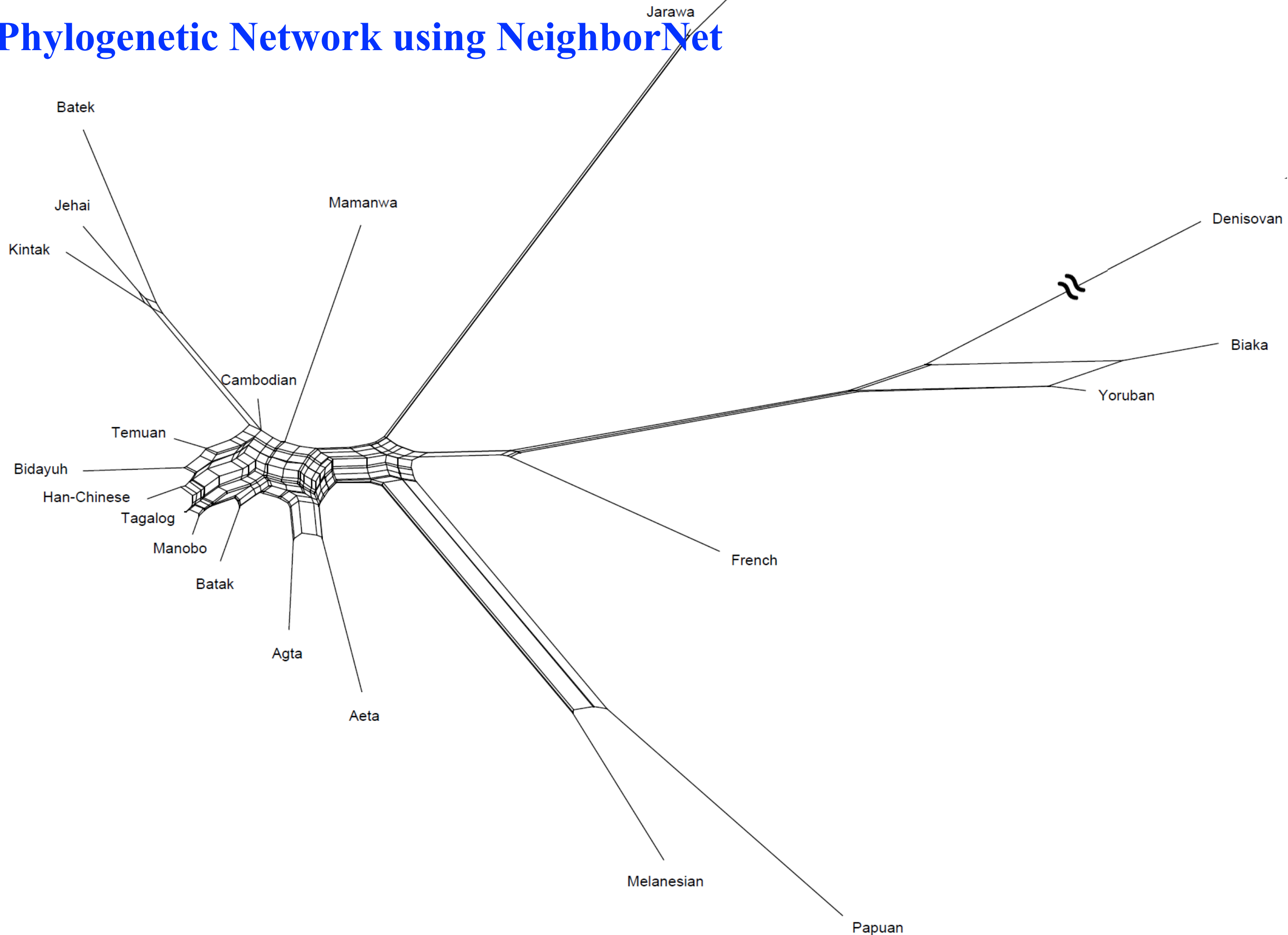
Phylogenetic tree using Neighbor-Joining method



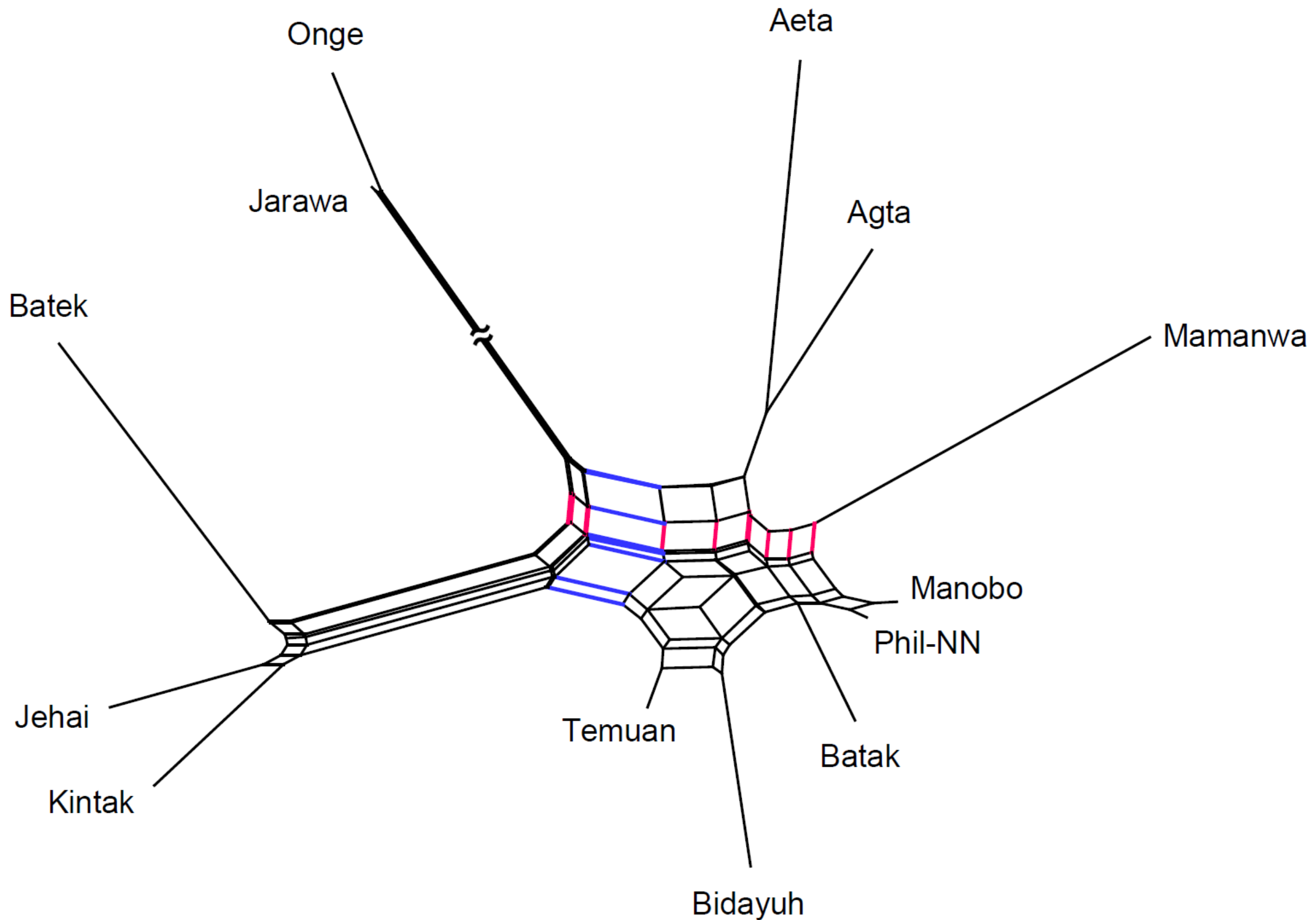
Phylogenetic tree using TreeMix method



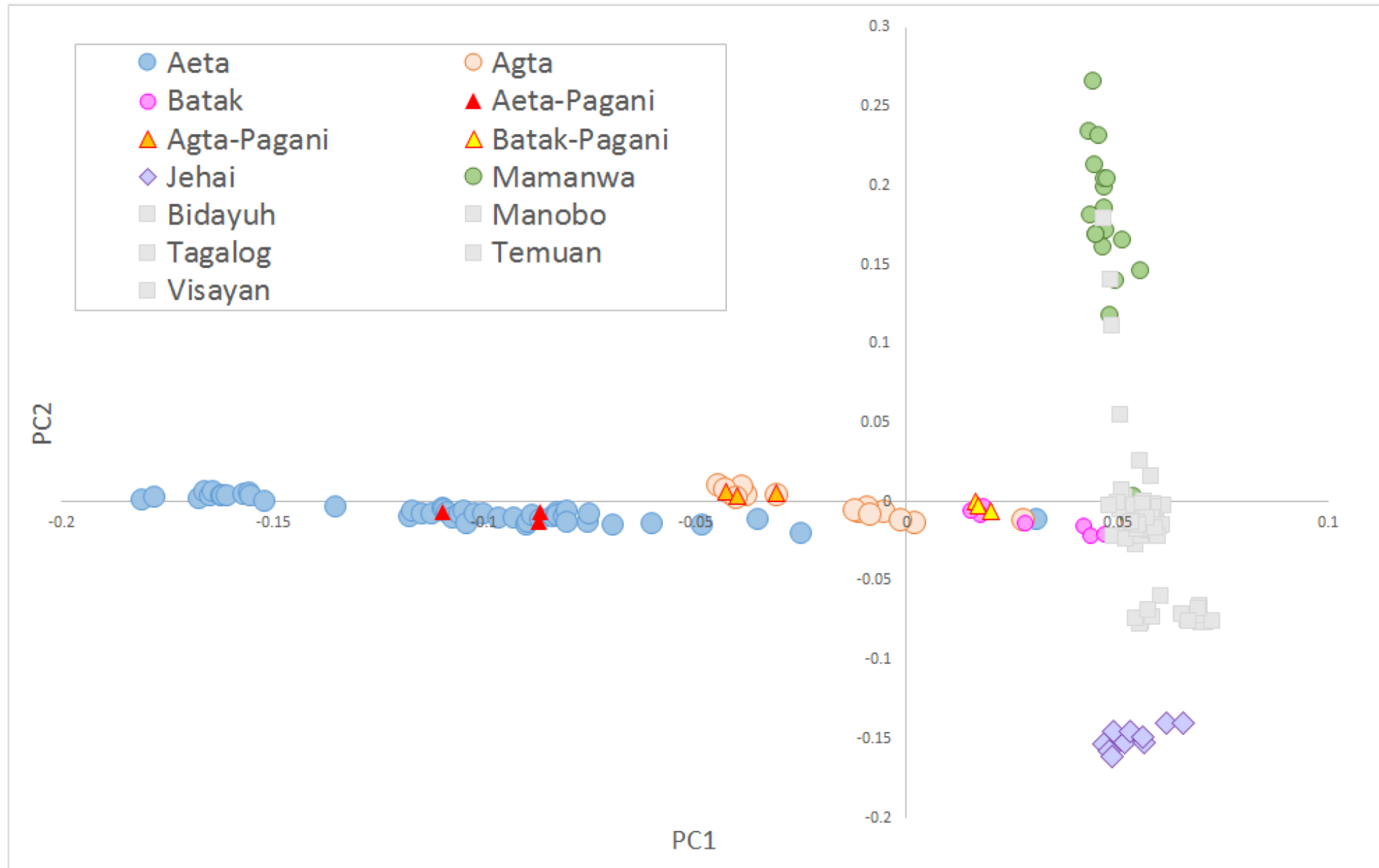
Phylogenetic Network using NeighborNet



Phylogenetic Network using NeighborNet

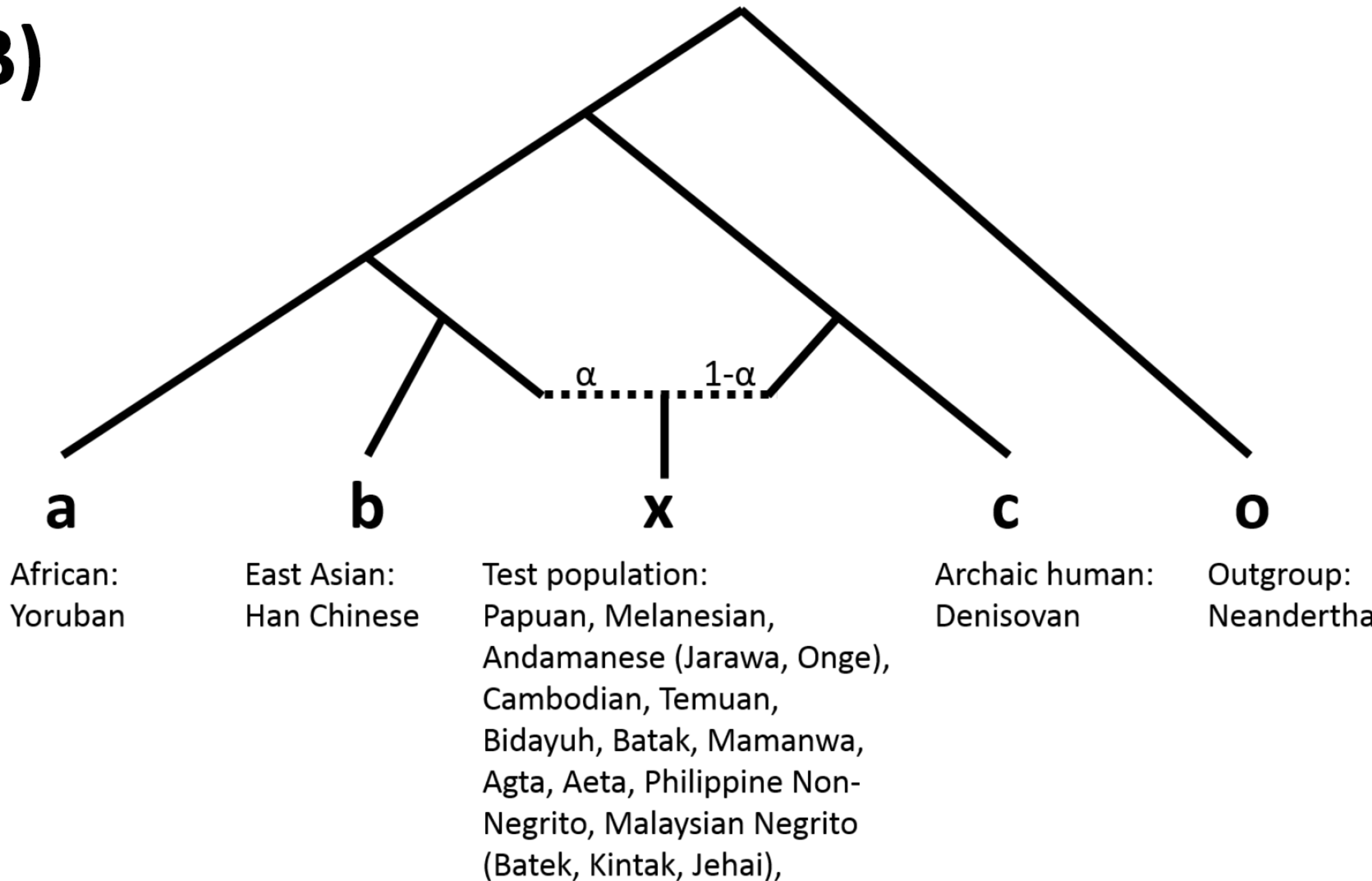


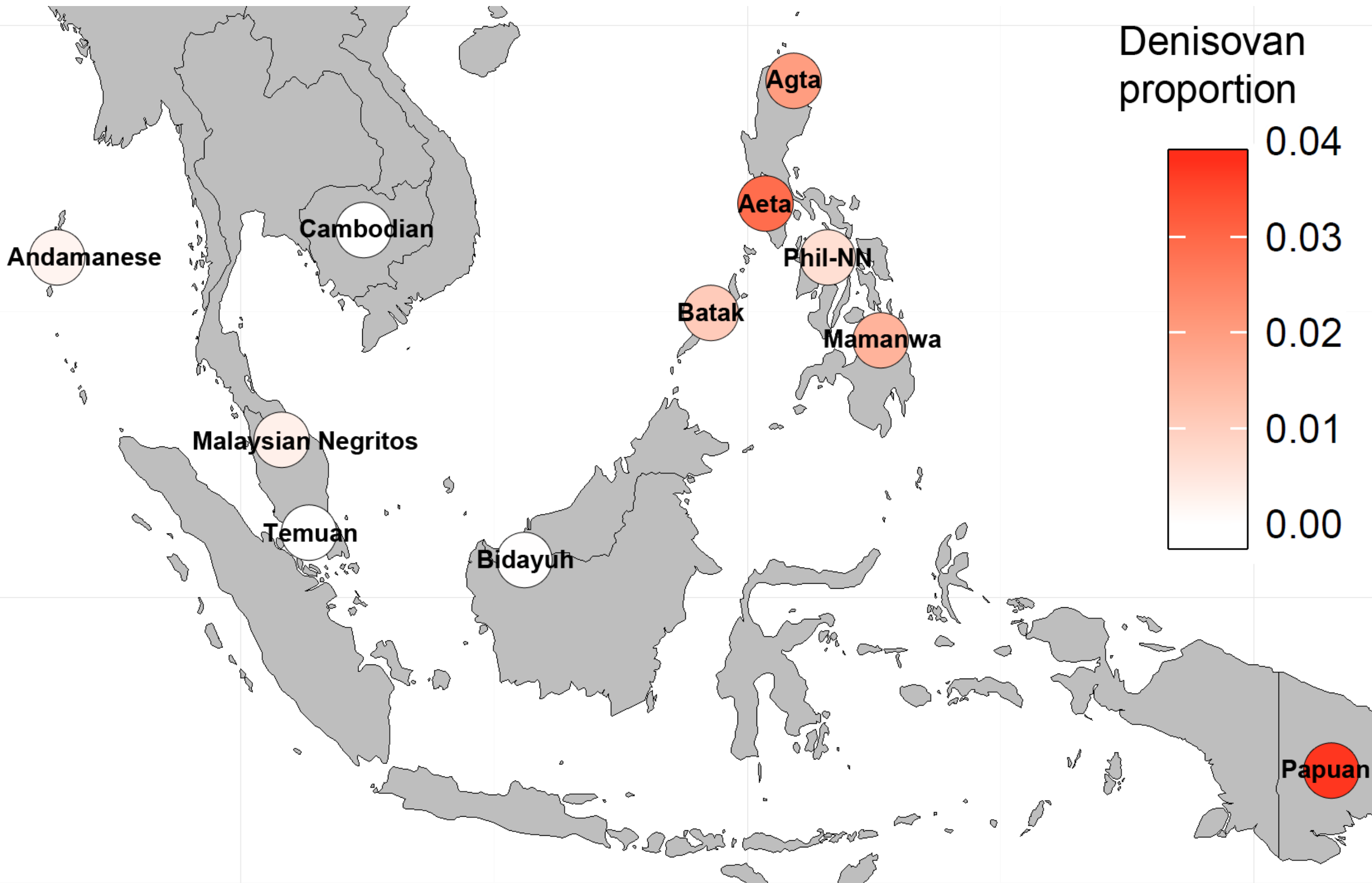
Introgression of Denisovan DNAs to Papuans and Aeta Negritos

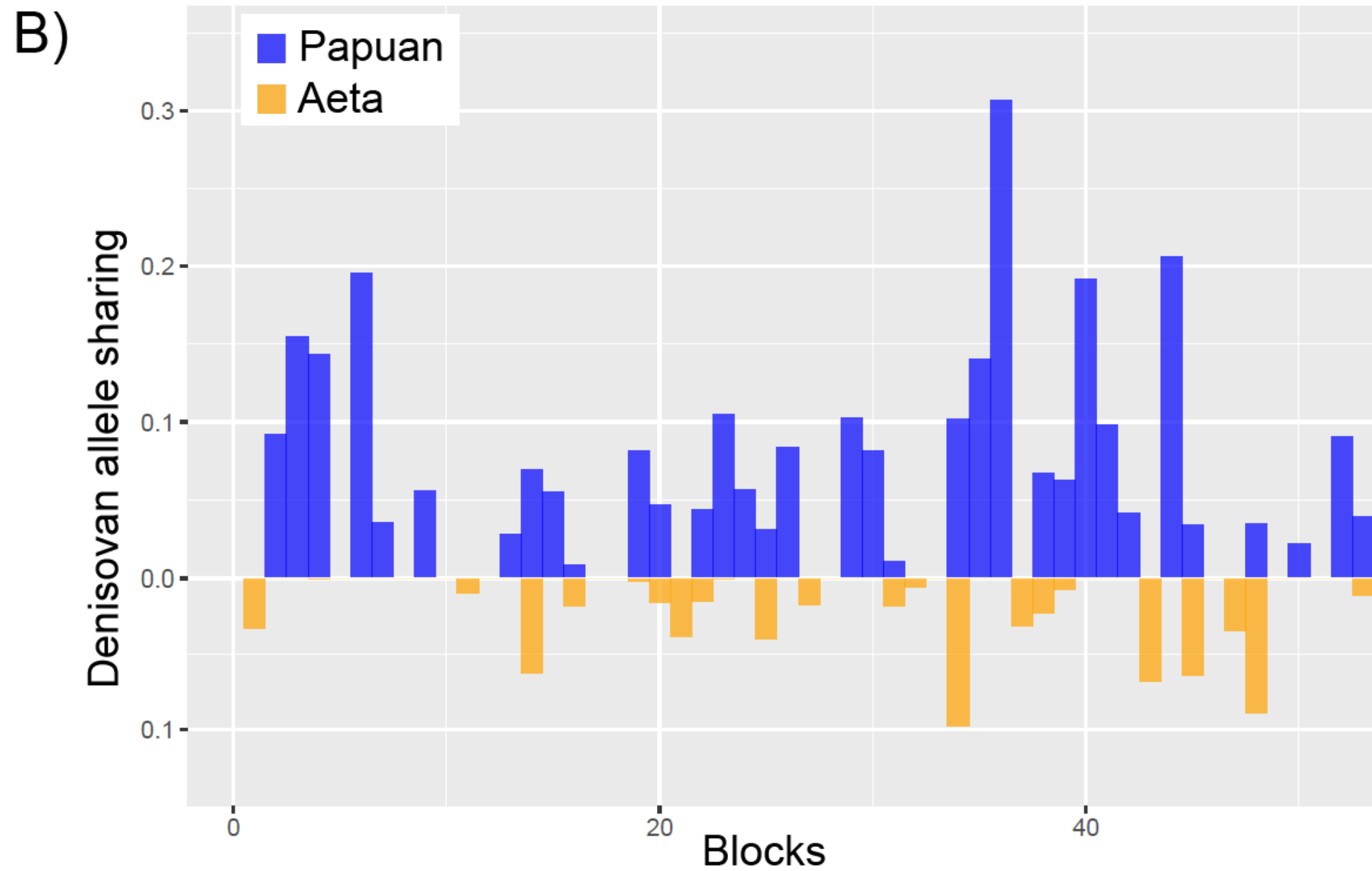
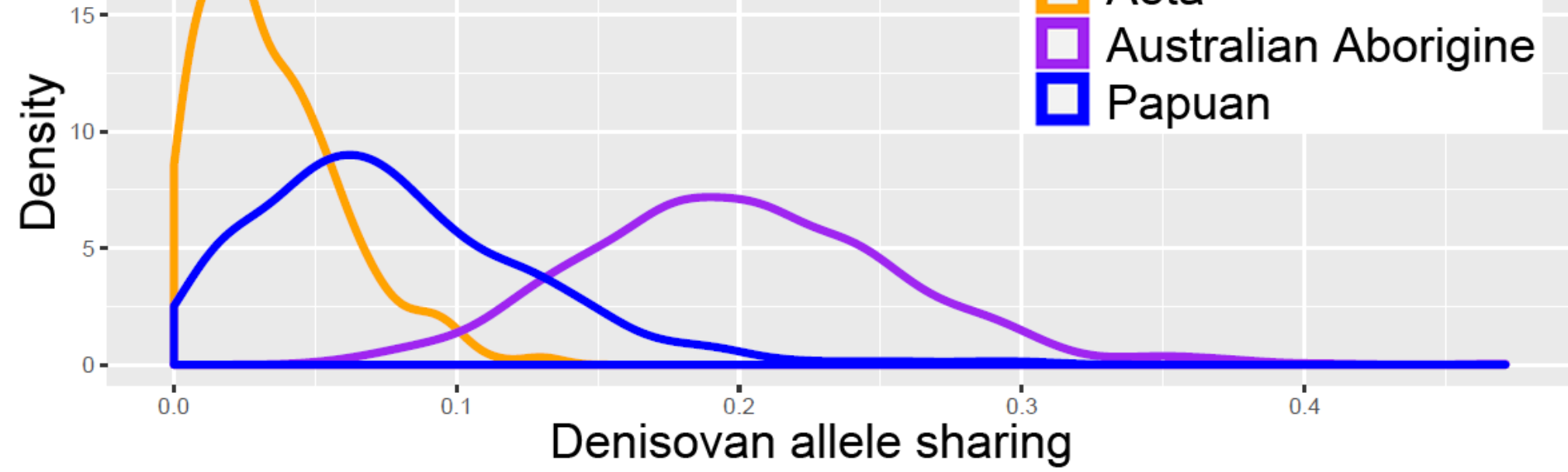


Introgression test of Denisovan DNAs to Negritos

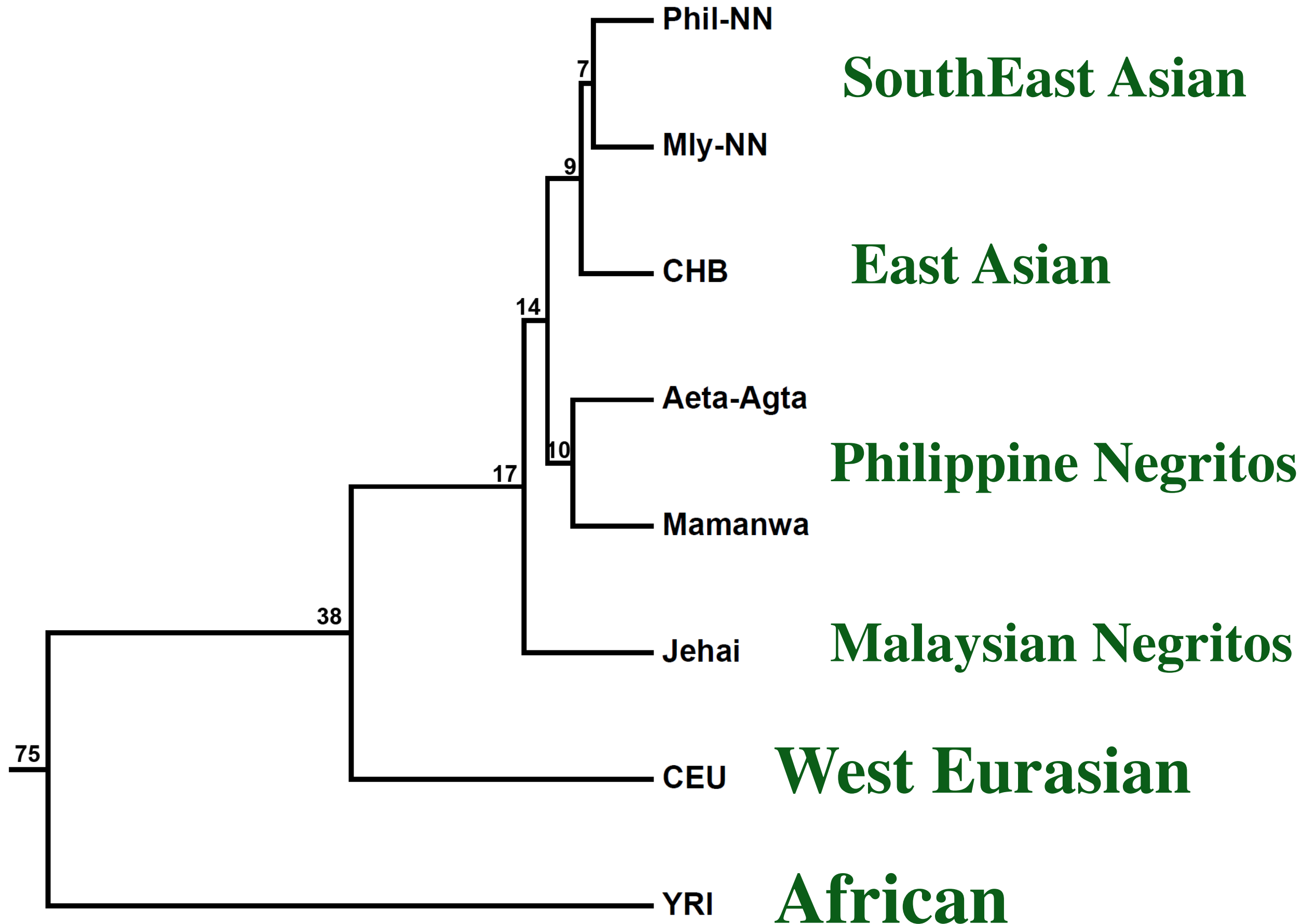
B)



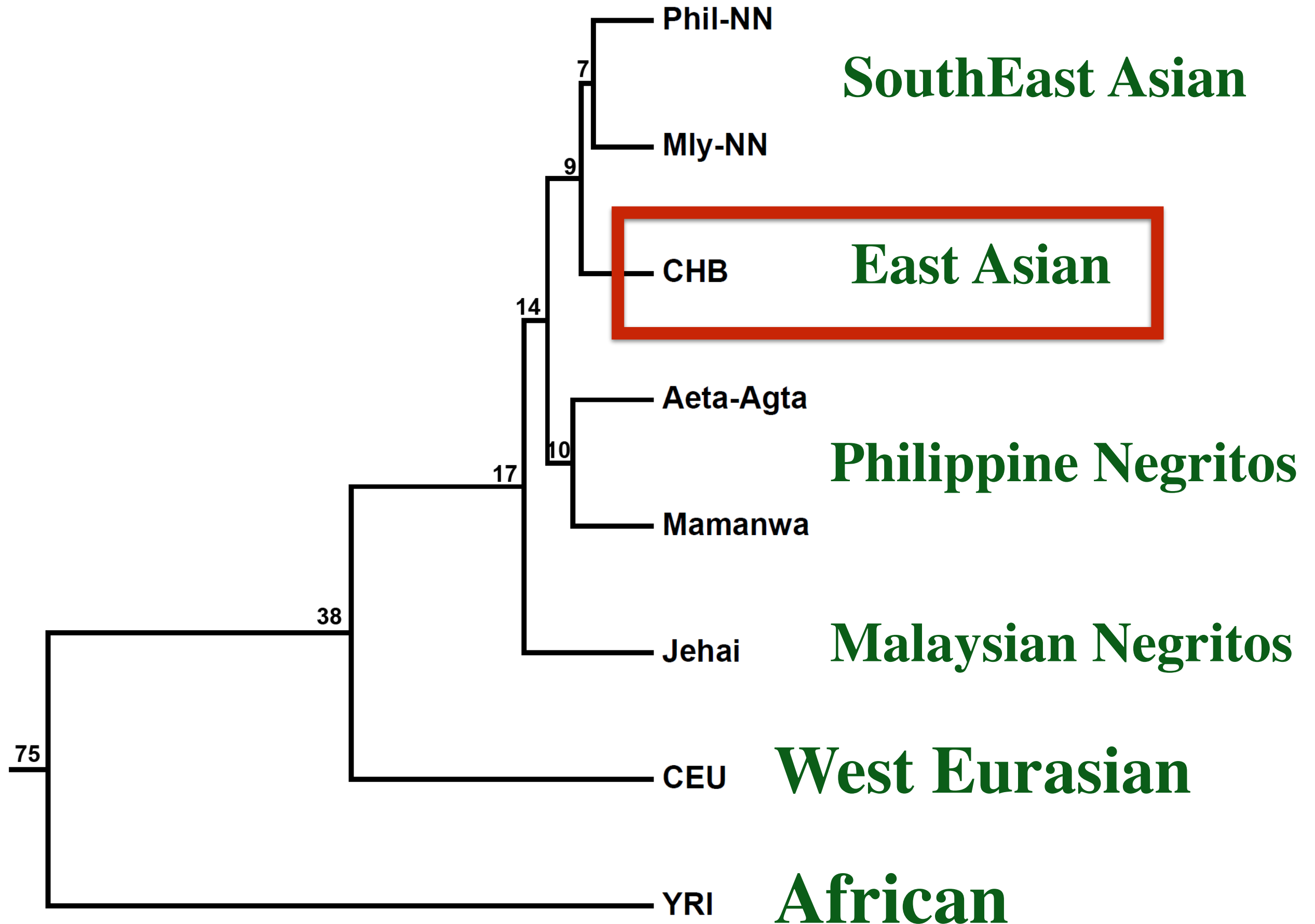




Divergence time estimates based on SNP data



Divergence time estimates based on SNP data



From Malaspinas et al. (2016)

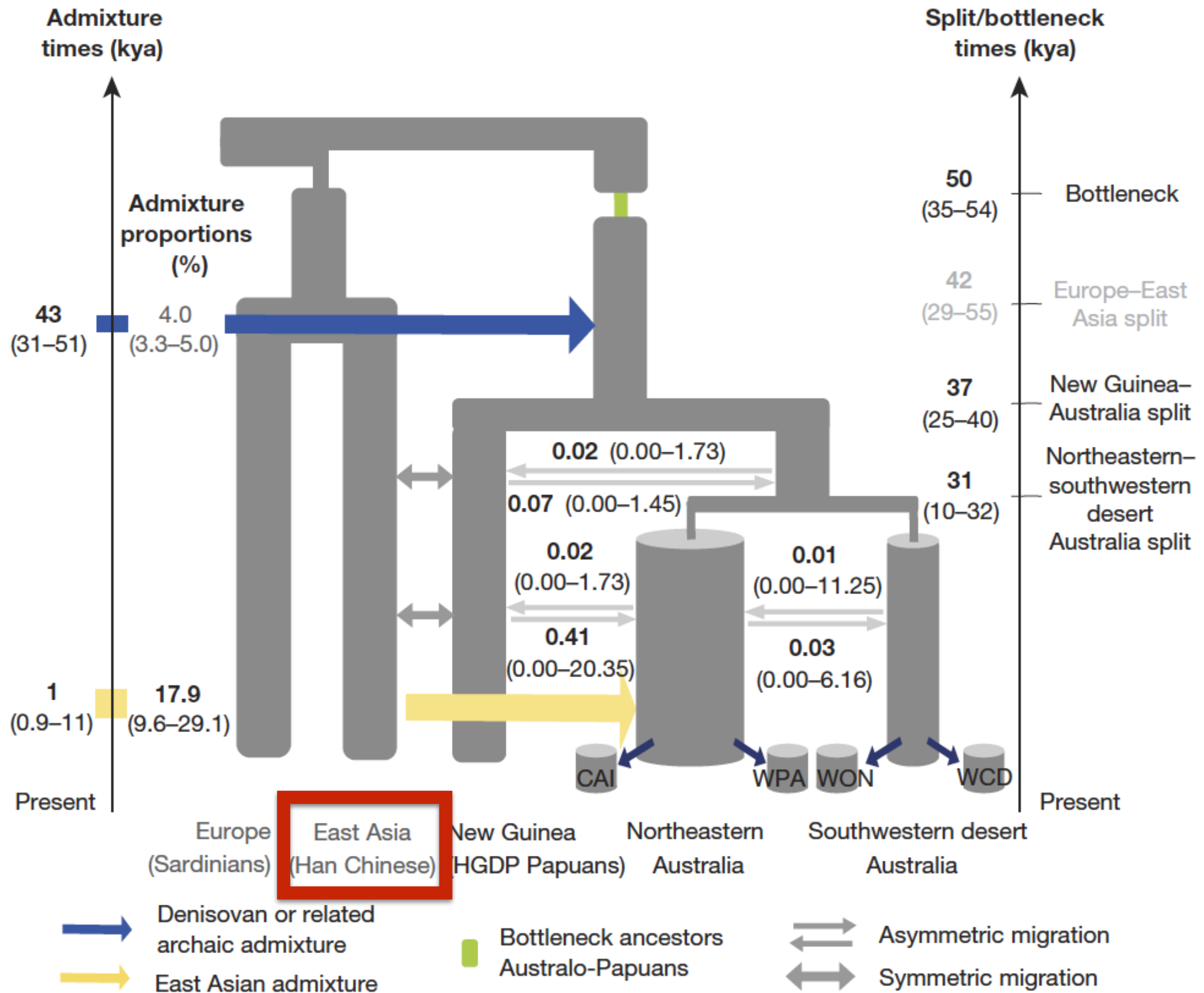
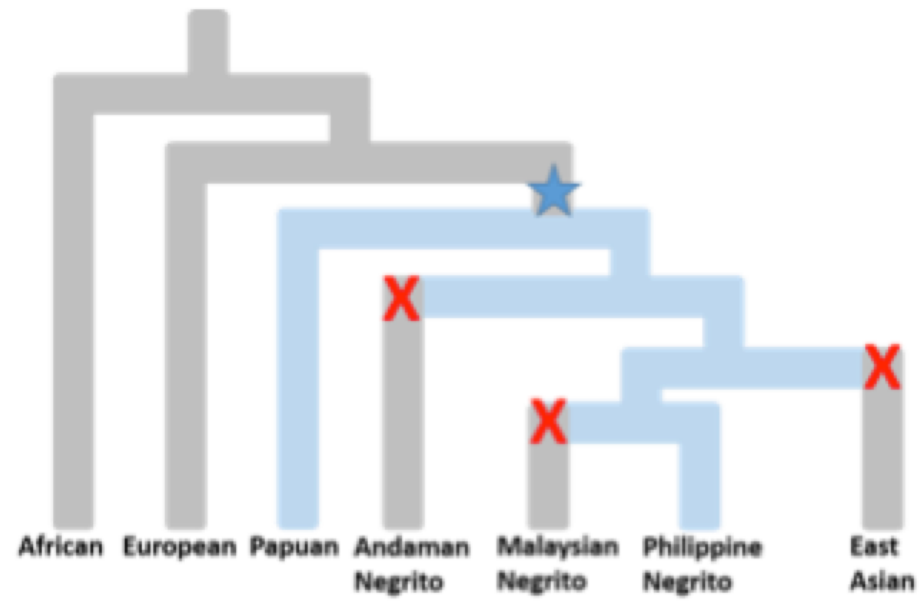


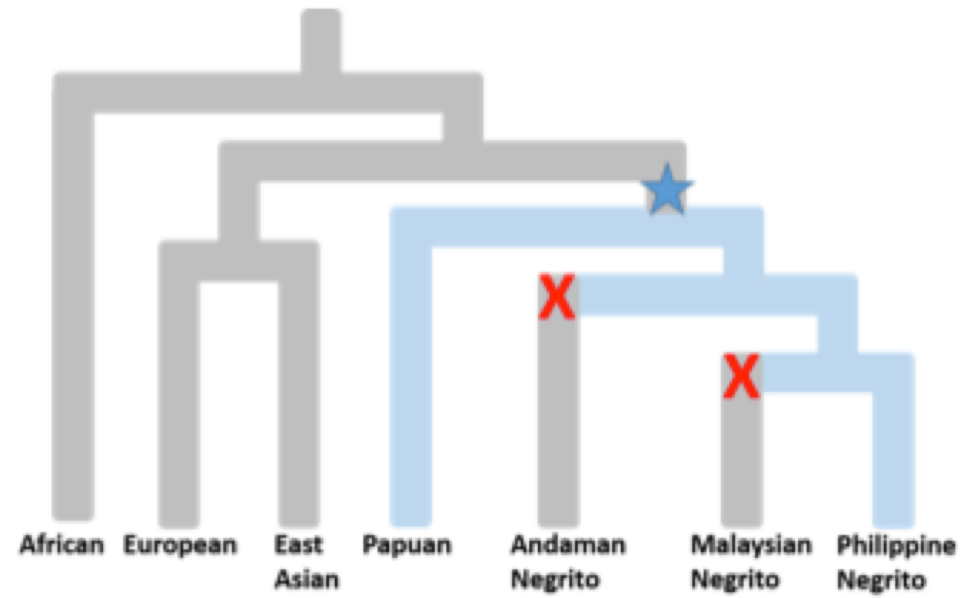
Figure 3 | Settlement of Australia. Best supported demographic model of

Four Possible Scenarios of Denisovan Introgression in Modern Humans

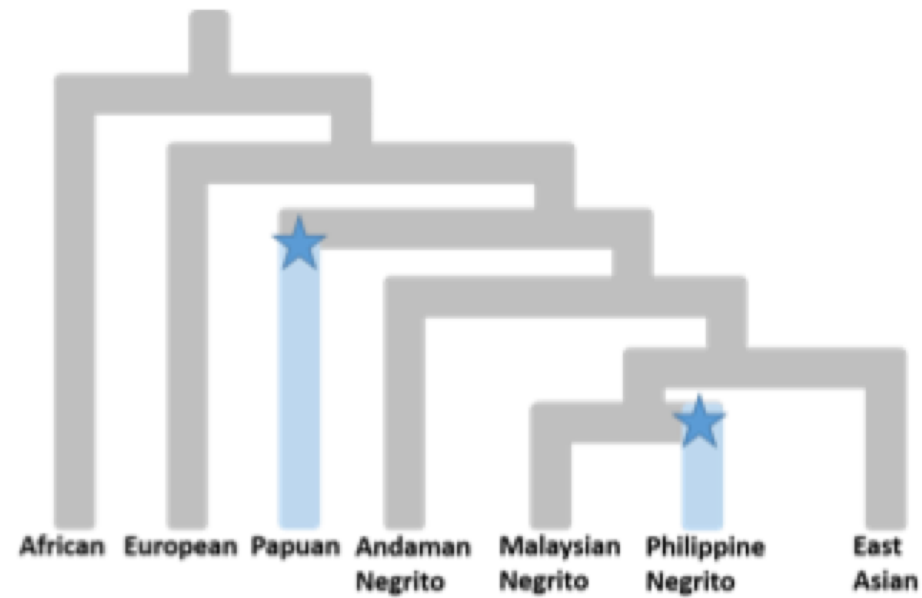
A)



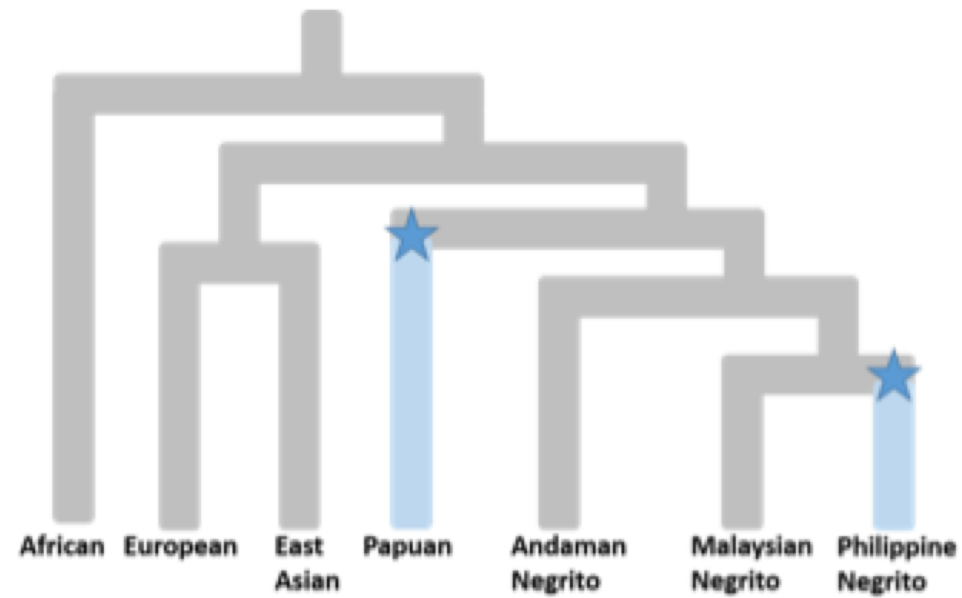
B)



C)



D)

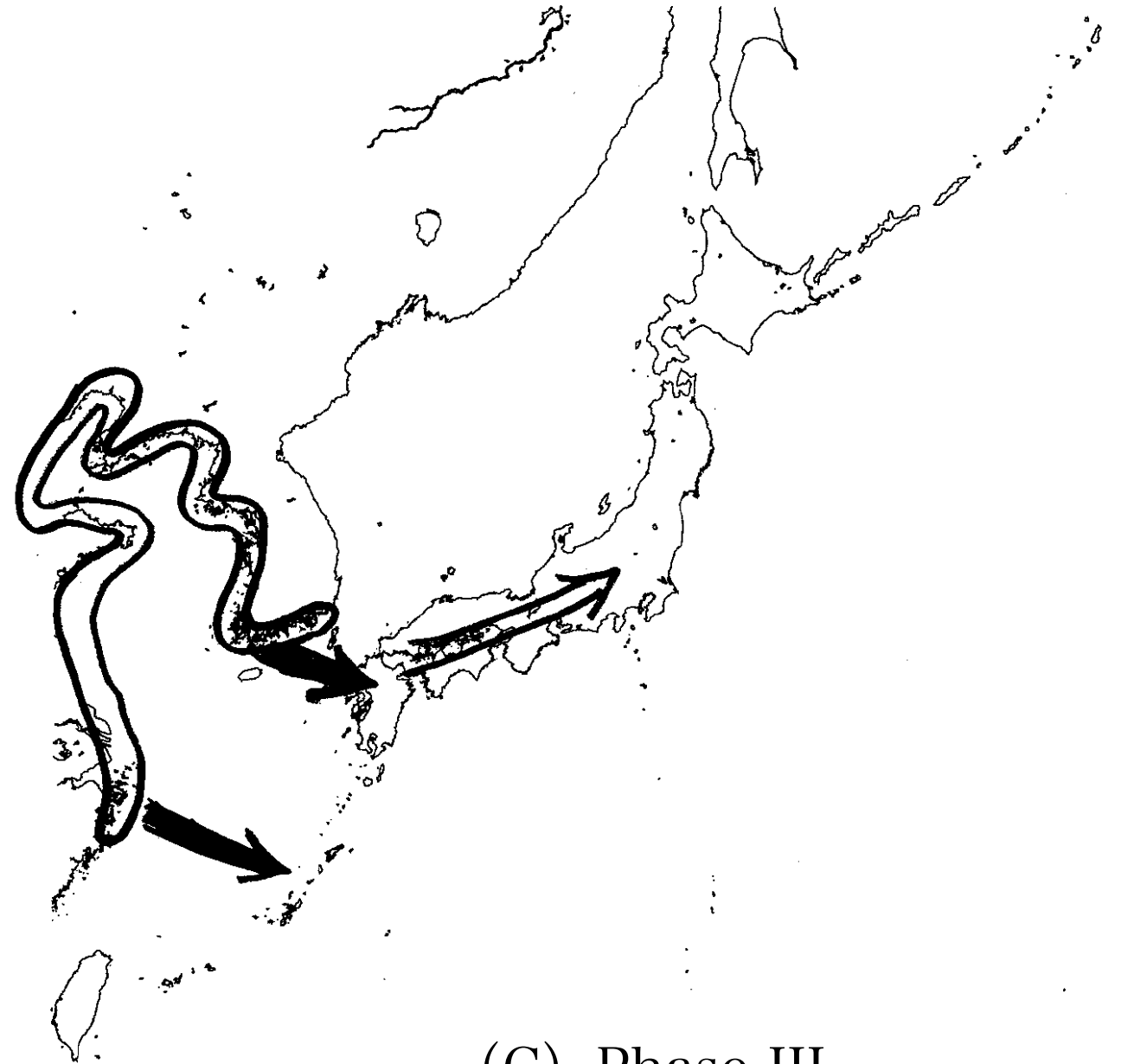


Three Phase migration model for formation of Japanese

(A) Phase I
(40,000~4,000 years ago)



(B) Phase II
(4000-3000 years ago)



(C) Phase III
(3000 years ago~)

From Saitou (in press)